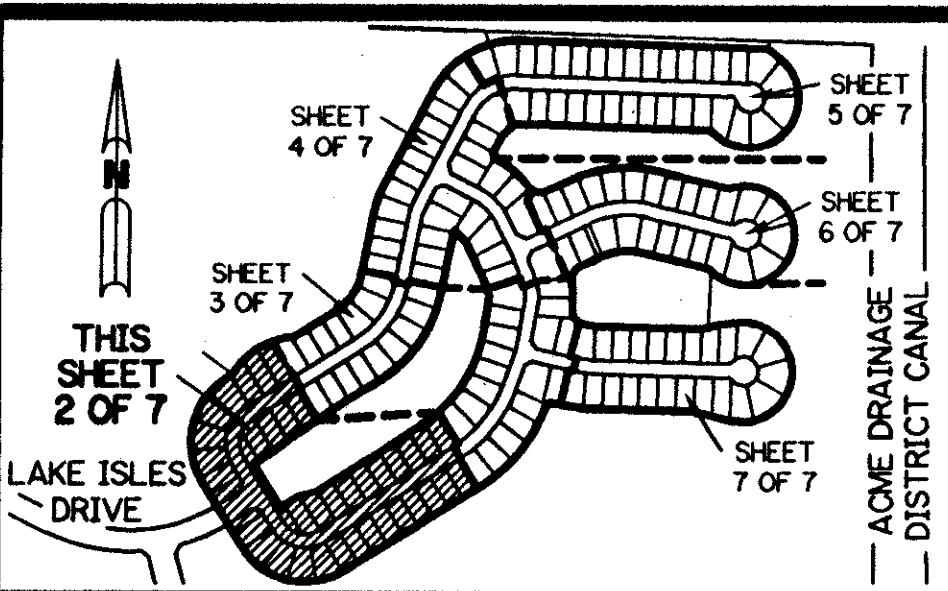


ORANGE POINT - TRACT "B"

A PART OF THE ORANGE POINT P.U.D.

BEING A REPLAT OF ALL OF TRACT "B" ACCORDING TO THE PLAT OF ORANGE POINT SECTION 23 AS RECORDED IN PLAT BOOK 79, PAGES 127 THROUGH 132, INCLUSIVE, OF THE PUBLIC RECORDS OF PALM BEACH COUNTY, FLORIDA. LYING IN SECTION 23, TOWNSHIP 44 SOUTH, RANGE 41 EAST. VILLAGE OF WELLINGTON, PALM BEACH COUNTY, FLORIDA

SHEET 2 OF 7 DECEMBER, 1996

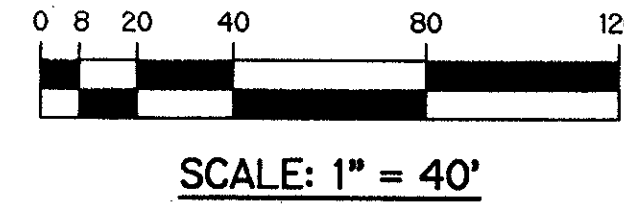


KEY MAP N.T.S.

NOTE:

COORDINATES SHOWN ARE GRID COORDINATES:
DATUM = NAD 83 (1990 ADJUSTMENT)
ZONE = FLORIDA EAST ZONE
LINEAR UNIT = U.S. SURVEY FEET
COORDINATE SYSTEM 1983 STATE PLANE TRANSVERSE MERCATOR PROJECTION
ALL DISTANCES ARE GROUND
SCALE FACTOR = 1.0000121
GRID BEARING IS THE SAME AS PLAT BEARING (NO ROTATION).

VILLAGE OF WELLINGTON
14000 GREENBRIAR BLVD.
WELLINGTON, FLORIDA 33414
(561) 791-4000



*DET. 84-98
ALOC. #0001
5/2/4/6*

- LEGEND:**
- - FOUND PERMANENT REFERENCE MONUMENT, PLS #5273
 - - PERMANENT REFERENCE MONUMENT, PLS #4213
 - ▲ - PERMANENT CONTROL POINT, PLS #4213
 - Δ - DELTA ANGLE
 - A.I.D. - ACME IMPROVEMENT DISTRICT
 - B.E. - BUFFER EASEMENT
 - C.B. - CHORD BEARING
 - C.D. - CHORD DISTANCE
 - C.L. - CENTERLINE
 - D.E. - DRAINAGE EASEMENT
 - L - ARC LENGTH
 - L.A.E. - LIMITED ACCESS EASEMENT
 - L.M.A.E. - LAKE MAINTENANCE ACCESS EASEMENT
 - L.M.E. - LAKE MAINTENANCE EASEMENT
 - N.R. - NOT RADIAL
 - N.T. - NOT TANGENT
 - N.T.S. - NOT TO SCALE
 - O.E. - OVERHANG EASEMENT
 - O.P.S. 23 - PER ORANGE POINT SECTION 23 (P.B. 79, PGS. 127 - 132)
 - O.R.B. - OFFICIAL RECORD BOOK
 - O.S. - OPEN SPACE
 - P.B. - PLAT BOOK
 - P.C. - POINT OF CURVATURE
 - P.G.S. - PAGES
 - PLS - PROFESSIONAL LAND SURVEYOR
 - P.S.M. - PROFESSIONAL SURVEYOR AND MAPPER
 - P.T. - POINT OF TANGENCY
 - P.U.D. - PLANNED UNIT DEVELOPMENT
 - R - RADIUS
 - R/W - RIGHT-OF-WAY
 - S.T. - SURVEY TIE
 - T - TANGENT LENGTH
 - U.E. - UTILITY EASEMENT
 - W.S.E. - WATER & SEWER EASEMENT
 - N 737648.0171 - DENOTES STATE PLANE COORDINATES
 - E 905258.2326

THIS INSTRUMENT PREPARED BY
PERRY C. WHITE, P.S.M. 4213, STATE OF FLORIDA
LAWSON, NOBLE AND WEBB, INC.
ENGINEERS PLANNERS SURVEYORS
WEST PALM BEACH, FLORIDA

0284-006

SUBDIVISION * ORANGE POINT TRACT B
BOOK 80
FLOOD ZONE 100B
QUAD * 63
SE 79-283
PUD NAME VILLAGE OF WELLINGTON

Received